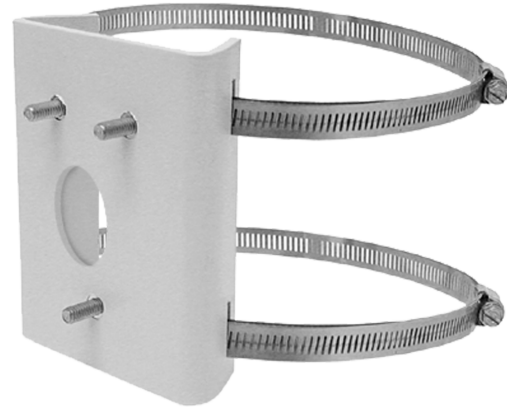


PA101 Pole Mount Adapter

POLE MOUNT ADAPTER, LIGHT DUTY

Product Features

- Indoor and Outdoor Installations Supported
- For Use with WMVE-SR, EM16, EM14, CM1450, EM1400, EM1450, PM14, and MM1000 Mounts
- Mounts to 7.62 cm (3 in.) to 20.32 cm (8 in.) Diameter Poles
- Durable Aluminum and Stainless Steel Construction



The PA101 pole mount adapter is designed to support standard wall mounts enabling the installation of CCTV equipment on a pole.

The PA101 pole mount adapter is supplied with stainless steel straps to fasten the adapter to a pole. Stainless steel hardware also is provided for attaching a wall mount to the adapter. Lightweight, rugged, and easy to install, the pole mount adapter is constructed of aluminum and has a gray polyester powder coat finish.

MODEL

PA101 Pole mount adapter

MECHANICAL

Pole Mount Method Attach WMVE-SR, EM16, EM14, CM1450, EM1400, EM1450, PM14, and MM1000 mounts using the supplied adapter bolts


Cable Entry Through the 2.5 cm (1 in.) conduit access opening.

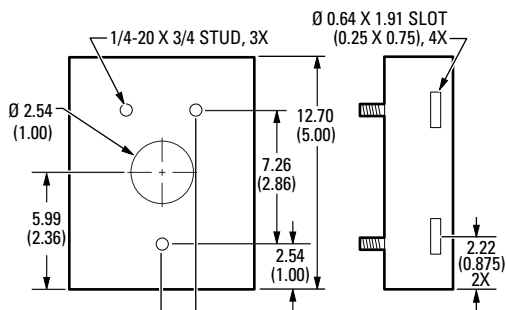
GENERAL

Construction Aluminum Finish

Finish Gray polyester powder coat

Unit Weight 0.9 lb (0.4 kg)

 VALUES IN PARENTHESES ARE INCHES; ALL OTHERS ARE CENTIMETERS.
DRAWINGS AND DIMENSIONS NOT TO SCALE.



▲ **WARNING:** Cancer and Reproductive Harm - www.P65Warnings.ca.gov.
▲ **ADVERTENCIA:** Cáncer y Daño Reproductivo - www.P65Warnings.ca.gov.
▲ **AVERTISSEMENT:** Cancer et Troubles de l'appareil reproducteur - www.P65Warnings.ca.gov.

Pelco, Inc.
625 W. Alluvial, Fresno, California 93711 United States
USA & Canada Tel (800) 289-9100 Fax (800) 289-9150
International Tel +1 (559) 292-1981 Fax +1 (559) 348-1120
www.pelco.com www.pelco.com/community

Pelco, the Pelco logo, and other trademarks associated with Pelco products referred to in this publication are trademarks of Pelco, Inc. or its affiliates. ONVIF and the ONVIF logo are trademarks of ONVIF Inc. All other product names and services are the property of their respective companies.
Product specifications and availability are subject to change without notice.
©Copyright 2015, Pelco, Inc. All rights reserved.